

# AKASH



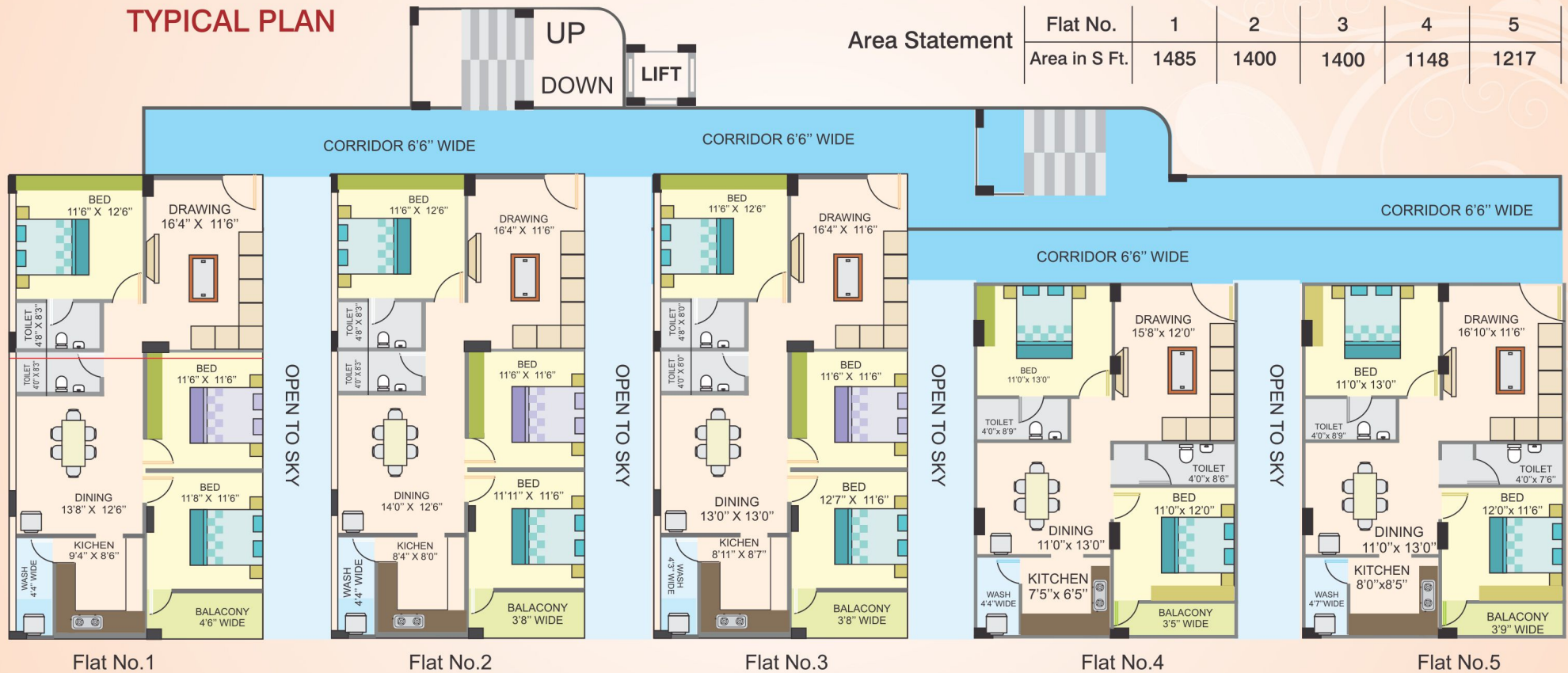
# Block -1 Model Floor Plan

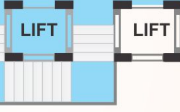
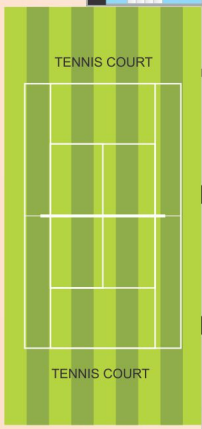
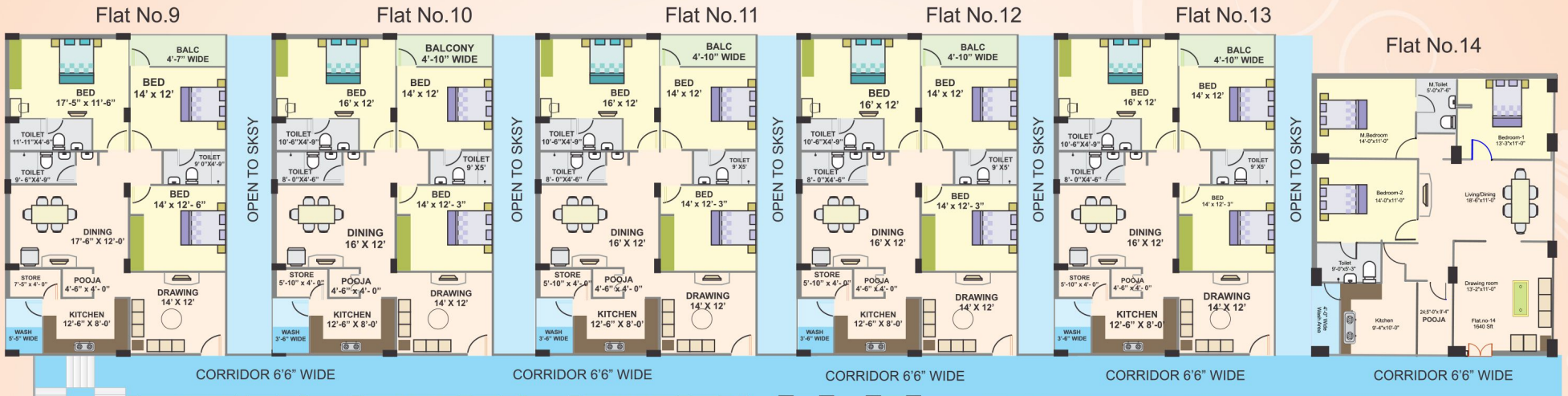


## TYPICAL PLAN

### Area Statement

Flat No.	1	2	3	4	5
Area in S Ft.	1485	1400	1400	1148	1217





Area Statement

Flat No.	6	7	8	9	
Area in S Ft.	1950	1950	1900	1950	
Flat No.	10	11	12	13	14
Area in S Ft.	1850	1850	1850	1850	1640

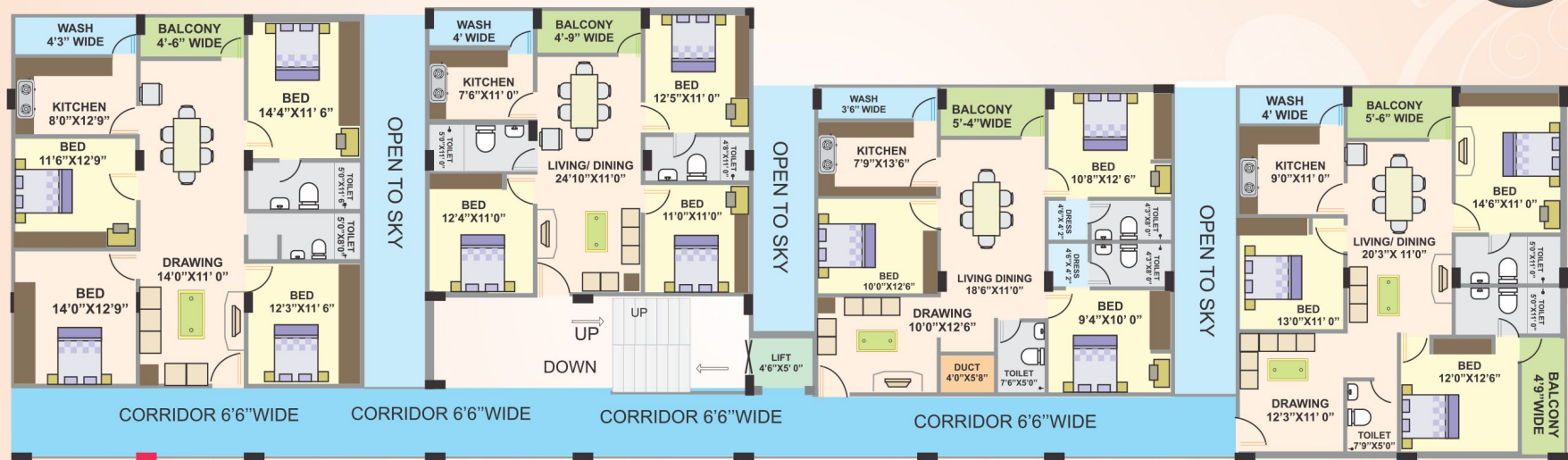


TYPICAL PLAN

Block -2  
Model Floor Plan

# Block- 3 Model Floor Plan

## TYPICAL PLAN



Flat No.15

Flat No.16

Flat No.17

Flat No.18

Area Statement	Flat No.	15	16	17	18
	Area in S Ft.	1813	1296	1490	1702

# Specifications



## FOUNDATION & STRUCTURE

- RCC framed structure, designed for wind and earthquake forces (Hyderabad Zone)



## SUPER STRUCTURE

- Good Quality table moulded light weight brick works. All external walls are 9" thick and internal walls 4" thick.



## PLASTERING:

- Internal: Double coat cement plastering with luppum. • External: Double coat cement plastering,



## Doors/Windows

- **MAIN DOOR:** Teakwood frame & Teakwood shutter with vision panel and designer beading. Shutter finished with melamine matt polish fixed with good quality brass hardware fixtures.
- **INTERNAL DOORS:** Teakwood frames & good quality water proof shutters.
- **WINDOWS:** Teakwood frames and shutters with glass panels and standard hardware fixtures.



## PAINTING WORKS:

- **INTERNAL:** Two coats of plastic emulsion paint over a base of primer.
- **EXTERNAL:** Premium quality weather protected Apex or Ace paint.
- Premium quality Vitrified tiles for the entire flat except toilets and balconies.
- Premium quality acid resistant and antiskid ceramic tiles for toilets and balconies
- **TOILETS:** Best quality acid resistant ceramic tiles
- **KITCHEN:** Stain free ceramic tiles dado up to 2ft ht above kitchen platform.
- **UTILITY/WASH AREA:** Glazed ceramic tiles dado up to 3ft ht



## KITCHEN:

- Granite Platform with steel sink and sufficient bore & municipal water connection.



## TOILETS:

 All toilets to consist of:

- Wash basins as per ISI Standards. • W/C (Water Closet) of
- Hot and Cold water mixer with shower. • Provision of geyser points
- AH fixers are C.P coated best quality .



## WATER SUPPLY & PIPING :

- Superior quality GI/UPVC piping with special fittings as per IS1 standards.
- Bore water supply for the entire flat. • Municipal drinking water supply in kitchen.



## PLUMBING :

- All Plumbing points will be pressure tested as per ISI standards.



## ELECTRICAL:

- Concealed copper wiring of standard make,
- Power outlets for A/C in hall and bed rooms.
- Power outlets for geysers.
- Power provision for refrigerator, micro oven, mixer, grinders in kitchen.
- Plug points for TV and Audio Systems etc.
- 3-Phase supply for each unit and individual meter boards.
- Miniature circuit breakers (MCB) & HI ,CB for each distribution board.



## TELEPHONE :

- Telephone provision for master bedroom, drawing (or) living.



## CABLE TV:

- Provision of points for cable TV in master bedroom/living room



## COMMON AREA :

- Marble / Vitrified tiles with M.S Railing.



## PARKING AREA :

- Interlocking paver tiles (or) VDF flooring.



## LIFT:

- Six passengers high speed V3F Technology lift from MNC brand.



## AMENITIES: ( additional )

- Lift, Transformer, Car parking, 3 phase power connection, Municipal water, Drainage, Sewerage. Swimming Pool, Party Hall



## DG SET:

- Standby Silent Generator, Intercom facility,



## AMENITIES (OPTIONAL): Cost will be extra



## INTERNET :

- High speed internet provision for each flat.
- **Variation:** Arches if any , POP borders, False ceiling, Wardrobes etc.

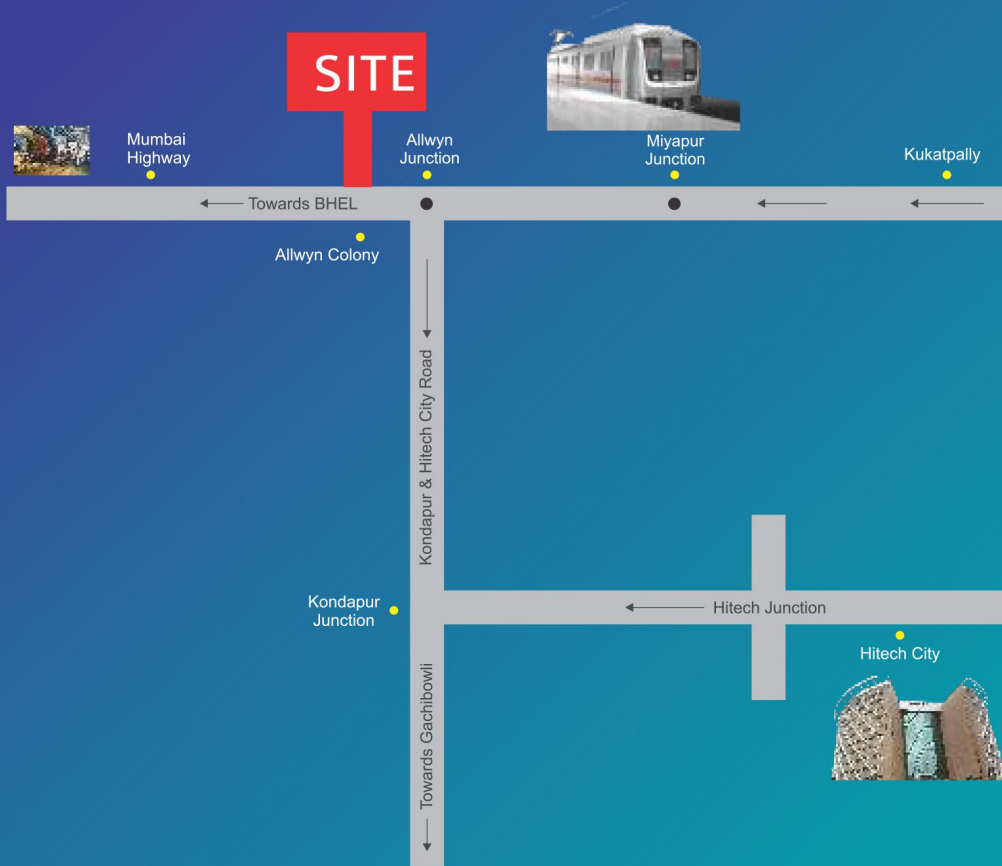


- Home Automation System. • Security Systems. • Video Door Phone.



- Solar Water Heater. • Burglar alarm System

# Location Map



**PEOPLE PROPERTY GROWTH**

People Property Growth  
Plot no 30, 5th floor, MSR CAPITAL Behind IOC Petrol Bunk,  
Miyapur metro station, Miyapur, Hyderabad, Telangana 500049  
[www.theppggroup.com](http://www.theppggroup.com)

NOTE : This brochure is only a conceptual presentation of the project and not a legal offering.  
The promoters reserve the right to make changes in the elevation, plans and specifications as deemed fit.